

### Programme – Sunday, 15.01.2017

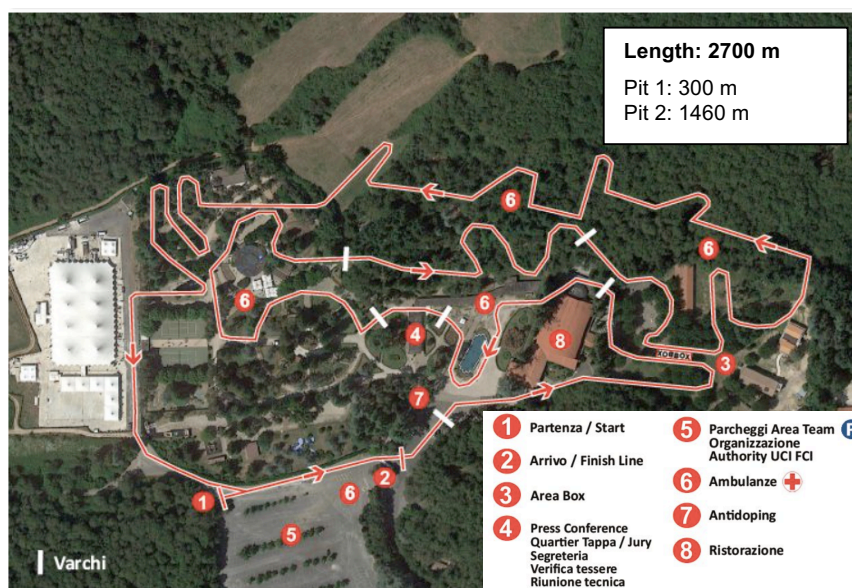
9:00 – 9:50	Official Training
10:00	Men Juniors
11:20	Men Under 23
12:30 - 13:20	Official Training
13:30	Women
15:00	Men Elite

### Race Numbers

- The small numbers must be fixed on the upper forearm (left and right).
- The back number must be fixed at the **left** side.

### Transponders

- Return to volunteer or finish truck.
- Failure to return will result in a 150 CHF charge.



### 80% Rule

Any rider whose time being 80% slower of that of the race leader's first lap will be pulled out of the race, except when the rider is on the final lap.

### Tyres

The width of the tyre (measured between the widest parts) shall not exceed **33 mm**.

### Outfit

- Riders are required to wear the outfit as indicated on the start lists:  
WCh: World Champion - WCL: World Cup Leader – CCh: Continental Champion - NCh: National Champion - N: National Outfit.
- Elite riders can race in trade team outfit.

### Start

- The start will be given by lights (red > green), riders causing a false start will be DSQ.
- A new Call-Up will happen.

### Prize Money/ Travel Allowances

- ME (T40), WE (T20) Prize Money: transfer to riders account.
- MJ (T15), MU (T20) Prize Money, National Teams MU and MJ (except ITA) Travel Allowances: Cash
- Contact: [john@cyclingservice.com](mailto:john@cyclingservice.com)
- Location: room team managers meeting

### Anti Doping Control

- Location: see map.
- The riders to be tested will be notified by a chaperone.
- There will be a list at the entrance of the doping control station and at the finish line.

**President of the Commissaires' Panel**  
**Doping Control Officer**  
**UCI Technical Delegate**  
**UCI Cyclo-cross Coördinator**

MARIËN Philippe (BEL)  
CARPINELLI Andres Ignacio (ARG) - 0039 366 8949339  
WABEL Beat (SUI)  
REILLE Christelle (FRA)